



25mg

Hammer Hemp Oil COA

Product Name 25mg CBD Soft Gels Curcumin
Product Code GCC3-X-Y-A

Ingredients:

Composition of Fill: Polysorbate 80, Polysorbate 20, Fractionated Coconut Oil, Broad-Spectrum CBD Oil (0.0% THC), β -Caryophyllene, Curcuminoids
Composition of the Shell: Bovine-derived Gelatin, Glycerin, Water

Parameter	Method*	Specification	Results	
Appearance	QCU002	Oval soft gelatin capsule	Pass	
Color		Dark Red	Pass	
Cannabinoids		LOQ (ppm)	WT (%)	
			(mg/g)	
CBD	QCU001 (UHPLC-DAD)	20	4.026	40.26
CBD-A		< LOQ	< LOQ	
Δ 9-THC		5	< LOQ	< LOQ
THC-A		5	< LOQ	< LOQ
CBN		5	< LOQ	< LOQ
CBN-A		5	< LOQ	< LOQ
CBG		5	< LOQ	< LOQ
CBC		5	< LOQ	< LOQ
CBC-A		5	< LOQ	< LOQ
Δ 8-THC		5	< LOQ	< LOQ
CBDV		5	0.061	0.613
CBDV-A		5	< LOQ	< LOQ
THCV		5	< LOQ	< LOQ
Potency - Total CBD			90-110% of Labelled Claim for CBD	25.6mg CBD / softgel 102% of Labelled Claim
Total THC		0.00%	0.00%	
Identity - CBD		Retention Time +/- 0.05min of Standard	0.00 min	
Curcumin Content	HPLC-DAD	82-120% of Labelled Claim for Curcumin	9.3mg Curcumin / softgel 93% Labelled Claim	
Terpenes**	GC/FID & LC/MS	Refer to Oil Specification	Refer to Oil Specification	
Pesticides**	LC/MS & GC/MS	Refer to Oil Specification	Refer to Oil Specification	
Residual Solvent**	USP <467>	Refer to Oil Specification	Refer to Oil Specification	
Elemental Impurities**	USP <2232>	Refer to Oil Specification	Refer to Oil Specification	
Microbial Limits**	USP <2032>	Refer to Oil Specification	Refer to Oil Specification	

Notes: *According to Hammer Nutrition 3rd party analytical method, US Pharmacopia or contract laboratory method. **Testing performed on bulk oil. ND=Not detected, LOQ=Limit of Detection

This product is not intended to diagnose, treat, cure, or prevent any disease and has not been evaluated by the FDA.



25mg

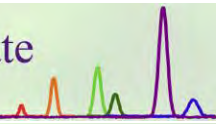
The above certificate of analysis is based on Product Specification (QA-FRM3-005 GC-NO-10-A) Revision No 00

Results conform to all specifications Yes
 No

Storage Room Temperature, Protect from Light and Protect from Moisture at less than 50% relative humidity (RH)

Allergens Declaration: This product contains *sulfites*.

This product is not intended to diagnose, treat, cure, or prevent any disease and has not been evaluated by the FDA.



Certificate ID: **79867**

Received: **3/23/20**

Scan QR Code for authenticity



Hammer Nutrition

4952 Whitefish Stage Road

Whitefish, MT 59937

Attn: Jewel Hiebert

Client Sample ID: **25mg**

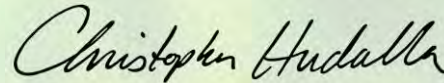
Lot Number: **1119-06**

Matrix: **Water Soluble - softgel**

Authorization:

Chris Hudalla, Chief Science Officer

Signature:



Date:

3/28/2020



The data contained within this report was collected in accordance with the requirements of ISO/IEC17025:2017. I attest that the information contained within the report has been reviewed for accuracy and checked against the quality control requirements for each method. These results relate only to the test article listed in this report. Reports may not be reproduced except in their entirety.

CN: Cannabinoid Profile & Potency [WI-10-17 & WI-10-17-01]

Analyst: RAS

Test Date: 3/27/2020

The client sample was analyzed for plant-based cannabinoids by Liquid Chromatography (LC). The collected data was compared to data collected for certified reference standards at known concentrations.

79867-CN

ID	Weight %	Concentration (mg/Capsule)		
D9-THC	ND	ND		
THCV	ND	ND		
CBD	3.80	23.25		
CBDV	0.03	0.21		
CBG	ND	ND		
CBC	ND	ND		
CBN	ND	ND		
THCA	ND	ND		
CBDA	ND	ND		
CBGA	ND	ND		
D8-THC	ND	ND		
exo-THC	ND	ND		
Total	3.83	23.46	0%	Cannabinoids (wt%) 3.8%
Max THC	ND	ND		
Max CBD	3.80	23.25		

Limit of Quantitation (LOQ) = 0.01 wt%

Max THC (and Max CBD) are calculated values for total cannabinoids after heating, assuming complete decarboxylation of the acid to the neutral form. It is calculated based on the weight loss of the acid group during decarboxylation: Max THC = (0.877 x THCA) + THC. This calculation does not include other cannabinoid isomers (eg. D8-THC and exo-THC). ND = None detected above the limits of detection (LOD), which is half of LOQ.

END OF REPORT